

SPECIFICATIONS:

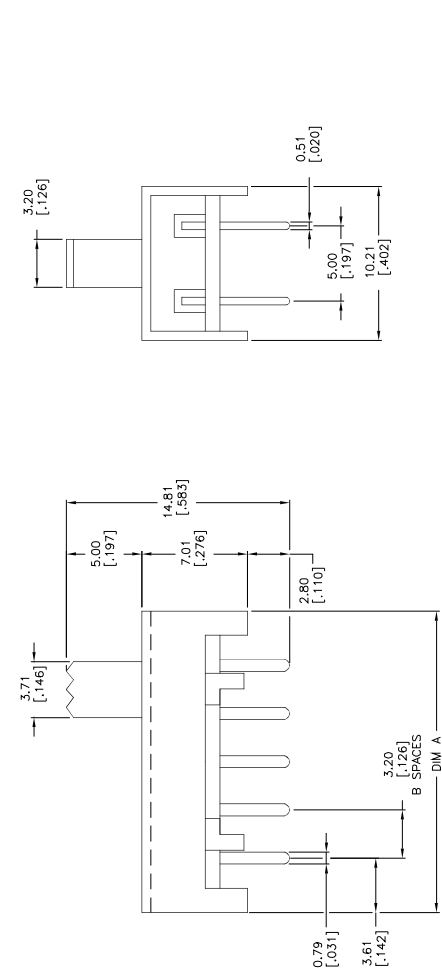
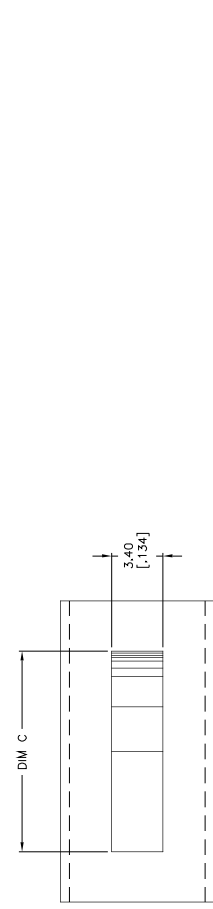
BREAK—BEFORE—MAKE
 MATERIALS:
 FRAME: STEEL, ZINC PLATE
 ACTUATOR: PBT UL94HB, BLACK
 FIXED CONTACT/TERMINAL: COPPER ALLOY, SILVER OVER NICKEL PLATE
 MOVING CONTACT: COPPER ALLOY, SILVER CLAD
 TERMINAL BOARD: PHENOLIC, UL94HB

ELECTRICAL:
 CONTACT RATING: 250 MILLIAMPS@125V AC, 150 MILLIAMPS@12V DC
 CONTACT RESISTANCE: 30 MILLIOHMS MAX. (INITIAL), 60 MILLIOHMS AFTER TEST
 INSULATION RESISTANCE: 500 MEGOHMS MIN.
 DIELECTRIC STRENGTH: 500 VOLTS RMS AT SEA LEVEL
 LIFE EXPECTANCY: 10,000 CYCLES MIN. NO. LOAD, 6,000 AT RATED CURRENT

MECHANICAL:
 ACTUATION FORCE: 250 +150/-100 GRAMS
 TRAVEL: .126 (3.20)

ENVIRONMENTAL:
 OPERATING TEMPERATURE: -10°C TO +60°C
 STORAGE TEMPERATURE: -10°C TO +60°C
 RESISTANCE TO SOLDER HEAT: 260°C FOR 10 SEC PER 109-202, CONDITION B
 SOLDERABILITY PER EIA-364-56A, PROCEDURE 3, CONDITION B

NOTES:
 1. ALL MATERIALS AND FINISHES SHALL COMPLY WITH EU DIRECTIVE 2002/95/EC(OF 27JAN2003 (ROHS)
 2. FOR FUNCTION DIAGRAM SEE SHEET 2 OF 2
 3. ALL PERFORMANCE SPECIFICATIONS WERE TESTED IN ACCORDANCE WITH JIS-C-5441 UNLESS OTHERWISE STATED.



.776 [19.71]	6 SPACES	1.039 [26.39]	6	SLS260PC04	1825080-5
.650 [16.51]	5 SPACES	.913 [23.19]	5	SLS250PC04	1825080-4
.524 [13.31]	4 SPACES	.787 [19.99]	4	SLS240PC04	1825080-3
.398 [10.11]	3 SPACES	.661 [16.79]	3	SLS230PC04	1825080-2
.272 [6.91]	2 SPACES	.535 [13.59]	2	SLS220PC04	1825080-1
DIM C	DIM B	DIM A	POSITION	ALCO PART NUMBER	TYCO PART NUMBER

THIS DRAWING IS A CONTROLLED DOCUMENT. TICO ELECTRONICS CORPORATION, 1400 SOUTH AVENUE, WESTMONT, PA 17105-3608

DATE: 06/17/08

DESIGNED BY: J.S. SARKER

DRAWN BY: J.S. SARKER

CHECKED BY: J.S. SARKER

APPROVED BY: J.S. SARKER

SCALE: 1:1

SHEET NO: 1 OF 2

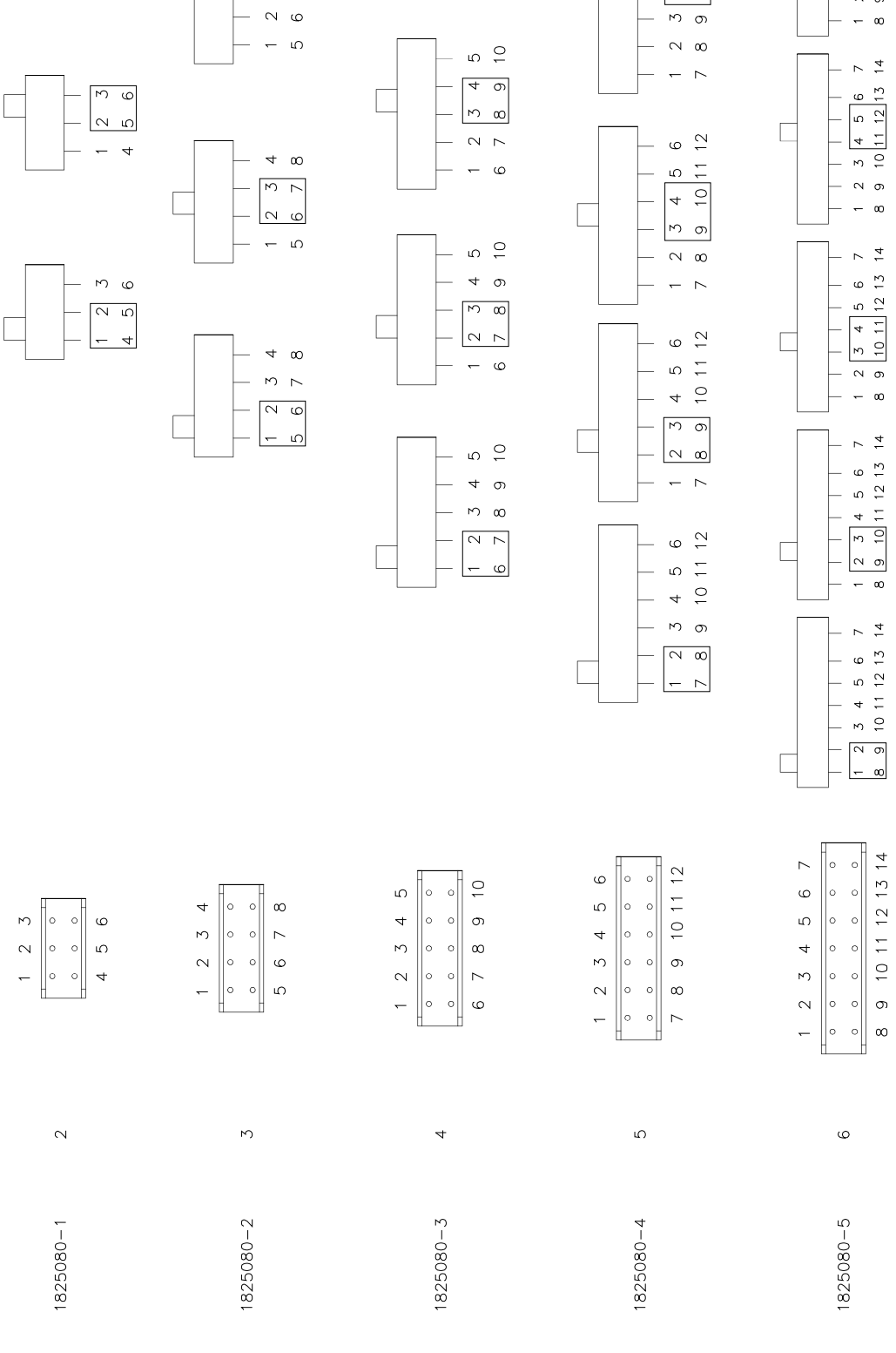
DRAWING NO: 1825080

CUSTOMER DRAWING

REV 1 2

PART NUMBER POSITION BOTTOM VIEW FUNCTION DIAGRAM

□ - INDICATES TERMINALS CONNECTED



THIS DRAWING IS A CONTROLLED DOCUMENT. THE COMPANY'S POLICY IS TO MAINTAIN THE INTEGRITY OF THIS DRAWING BY CONTROLLING THE NUMBER OF COPIES AND THE ACCESS TO THE ORIGINAL DRAWING.

DESIGNER: M.S. SARVER
 DRAWN: M.S. SARVER
 CHECKED: M.S. SARVER
 APPROVED: M.S. SARVER

DATE: 10/17/05
 SCALE: AS SHOWN
 SHEET NO: 1 OF 1
 DRAWING NO: 1825080

REVISIONS TO THIS DRAWING:
 2 TO 6 POSITION SEE SPEC

DATE: 10/17/05
 BY: M.S. SARVER
 CHECKED: M.S. SARVER
 APPROVED: M.S. SARVER

CUSTOMER DRAWING: 1825080

SCALE: 1:1

FIG. NO. 2 OF 2